



444 H Press



1. MOUNTING THE PRESS

To insure the best results from the No. 444 'H' press, it is first necessary to anchor the tool to a rugged bench. This is best accomplished by use of 5/16" bolts.

2. PREPARATION OF THE PRESS

After your loading tool is securely anchored to your bench, you are ready to set up the tool to reload. The shell holder rams have already been installed and tightened at the factory. Select the correct shell holders (CH No. 408) for the caliber desired. Gently pull the spring clip so that the shell holders may be slid into the groove of each ram, slide the shell holders into the rams, and secure the spring clips against the shell holders.

The CH No. 444 'H' press is designed to be used with 7/8-14 threaded dies. Install the dies in the head casting of the press. It is recommended that the sizing die be installed in the center rear station of the press to minimize stresses in the slide casting. You will note that a primer catcher has been provided for this station.

Priming is accomplished at the left-hand station of the press. Primer seating depth may be adjusted by moving the priming arm up or down, then tightening the lock nut.

Powder measures with conventional 7/8-14 threads may be installed at the left-hand station.

3. RELOADING PROCEDURE

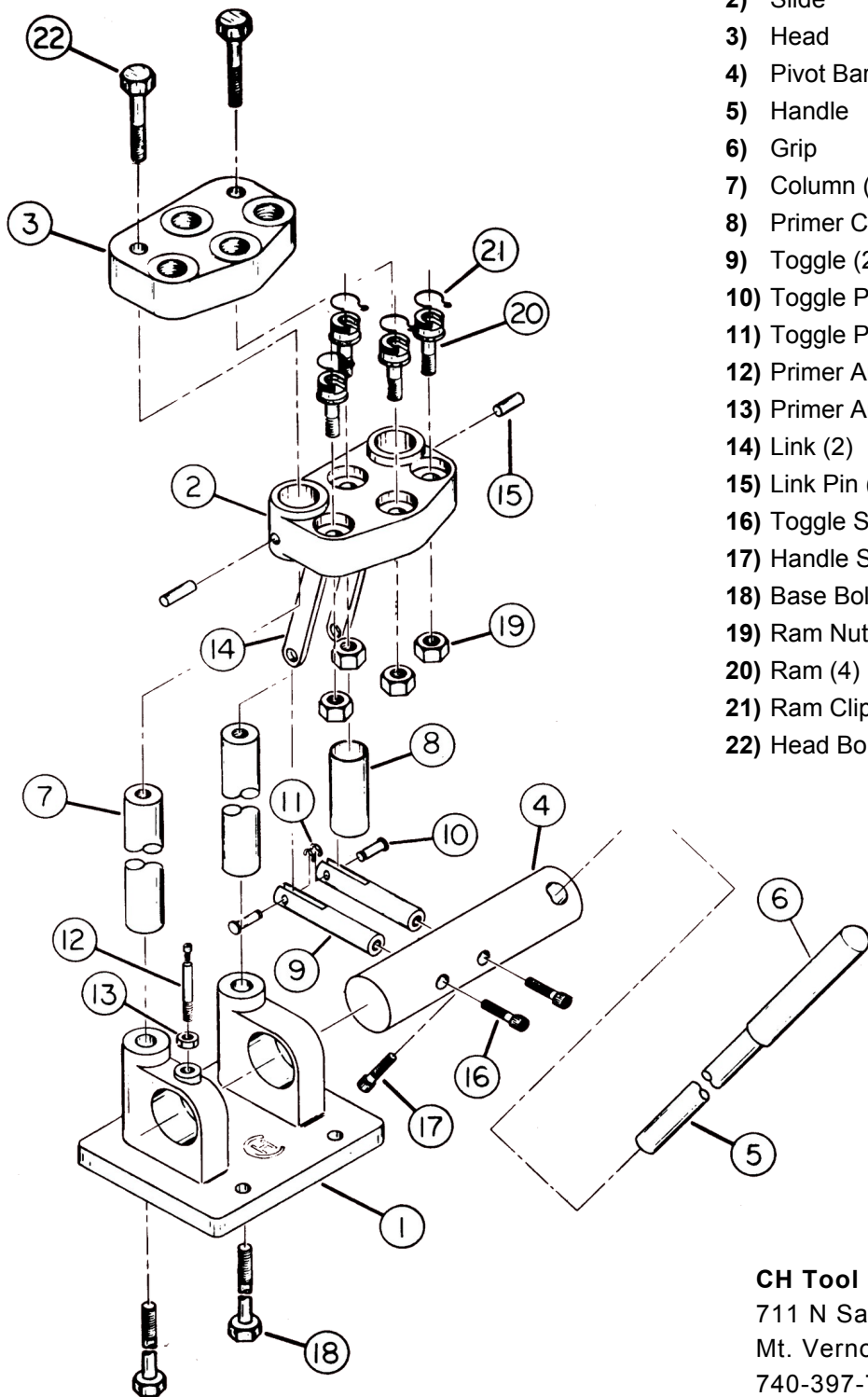
To reload, first place your case into the shell holder under the sizing die, and then run it into the die by moving the handle down. While in this position, place a new primer in the cup of the priming arm. Now raise the handle to withdraw the case from the die and place it in the shell holder over the priming arm. Gently raise the handle to seat the new primer. (Hold the case in position in the shell holder by hand when doing this. This will keep the case from moving off-center and insures proper seating of the primer).

There are many publications available showing recommended powder charges for the different calibers that will act as a guide to make up your own loads. Charge the case with powder, and then place it in the shell holder under the seating die. Place the bullet ahead of the case with your left hand and gently lower the handle with your right hand to guide the bullet and case into the die. Withdraw your left hand and move the handle down sufficiently to seat the bullet. You now have a completely reloaded round of ammunition.

NOTE: The above procedure will vary somewhat when a three-piece die set is used since sizing and expanding are accomplished in separate dies.

4. MAINTENANCE

There are no parts of the press that will require adjustments (except of course, the dies), and the tool will give you a lifetime of trouble-free operation. The only maintenance requires is the lubrication of the columns and pivot bar with a drop or two of light oil. It is recommended that the handle and other bare metal parts are given a light coating of oil to prevent corrosion.



- 1) Base
- 2) Slide
- 3) Head
- 4) Pivot Bar
- 5) Handle
- 6) Grip
- 7) Column (2)
- 8) Primer Catcher
- 9) Toggle (2)
- 10) Toggle Pin (2)
- 11) Toggle Pin Clip (2)
- 12) Primer Arm
- 13) Primer Arm Nut
- 14) Link (2)
- 15) Link Pin (2)
- 16) Toggle Screw (2)
- 17) Handle Screw
- 18) Base Bolt (2)
- 19) Ram Nut(4)
- 20) Ram (4)
- 21) Ram Clip (4)
- 22) Head Bolt (2)

CH Tool & Die LLC
 711 N Sandusky St
 Mt. Vernon, OH 43050
 740-397-7214
<http://www.chtoolanddie.com>

Mounting Pattern

