



Power Case Trimmer

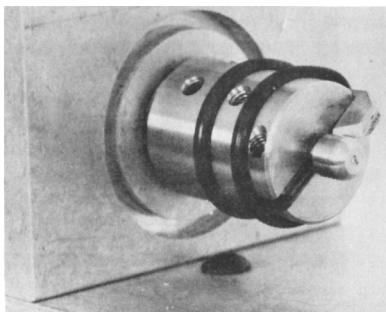


The CH Power Case Trimmer is, to the best of our knowledge, the first self-contained unit of its type. It is designed to automatically trim any case length from the very shortest to the very longest. There is over four inches of length possible from the pilot to the shell holder. This is adequate for any type of case that is currently available.

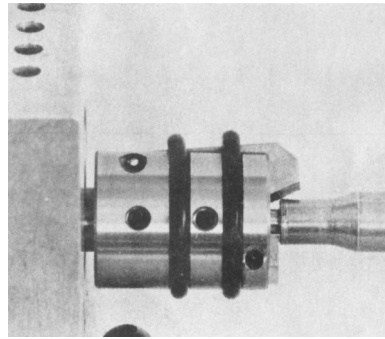
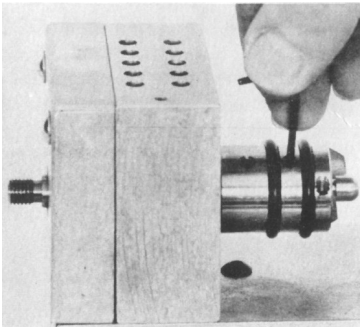
The carbide cutter is adjustable four ways. The cutter itself is square, and all four edges are beveled to the correct degree for trimming cases. It does not matter which edge is placed toward the shank of the pilot or which edge bears up against the pilot head as all four edges are exactly the same.

The cutter is Tungsten Carbide and should give a life-time of service. The self-contained deburring blade is hardened for long life. Pilots are likewise hardened for long life and are available for the majority of modern calibers.

Choose a convenient location on your bench to mount the trimmer. Drill two holes approximately 8 ½ inches apart. Obtain two screws of adequate size to securely hold the trimmer (flat washers are also preferable). Locate the mounting slots on the bottom of your trimmer and center them over the drilled holes. Drive in the screws until the trimmer is secure and does not move.



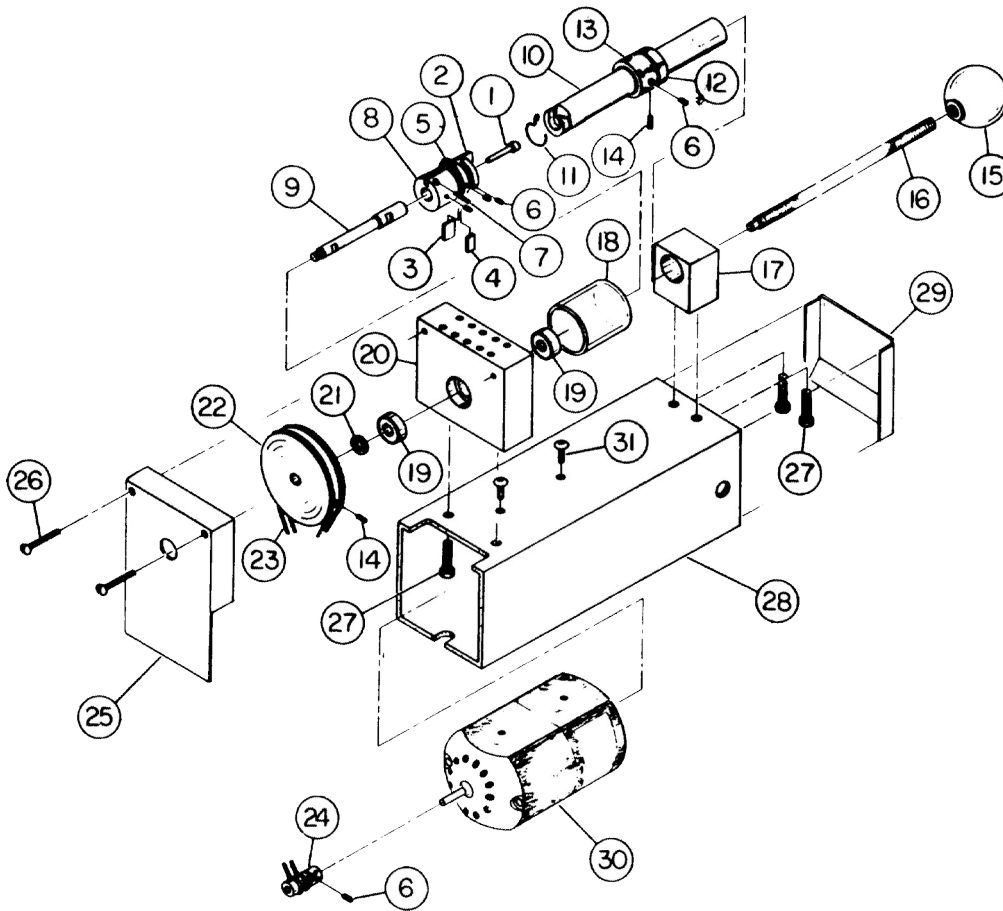
To setup the PCT-1000 Trimmer to trim your cases, remove the cutter shield and select the proper pilot. The pilots are numbered and a list of them appears on the last page of these instructions. The cutter blade and the cutter blade spacer have already been installed in the blade holder. Locate the pilot so the cutter blade rests on the shank of the pilot (*picture 1*). Press the pilot into the hole until it makes contact with the cutting edge of the blade. Lock the pilot and cutter blade with an appropriate allen wrench (*picture 2*). The deburring blade will automatically adjust itself on the pilot. No further adjustment is necessary on the deburring blade. This blade will automatically deburr the outside of the case as it is being trimmed (*picture 3*). Reinstall the cutter shield.



Loosen the lock screw by turning the knob counter clockwise. This will back out the lock screw and allow you to drop the proper shell holder into the ram. Insert the case to be trimmed into the shell holder and tighten the lock screw by turning it clockwise until the case is secure. Adjust the coarse adjustment collar and fine adjustment nut to achieve the desired case length.

For best results, try to maintain smooth ram operation. Applying sudden movements of the ram will result in undesirable results.

PARTS LIST



- 1) Pilot (specify caliber)
- 2) Deburring Blade
- 3) Cutter Blade (carbide)
- 4) Cutter Blade Spacer
- 5) Tension Ring (specify size)
- 6) Short set screw
- 7) Deburring Blade Pin
- 8) Blade Holder
- 9) Drive Shaft
- 10) Ram
- 11) Shell Holder Clip
- 12) Coarse Adjustment Collar
- 13) Fine Adjustment Nut
- 14) Long Set Screw
- 15) Knob
- 16) Lock Screw
- 17) Tail Block
- 18) Cutter Shield
- 19) Bearing
- 20) Head Block
- 21) Pulley Spacer
- 22) Driven Pulley
- 23) Drive Belt
- 24) Drive Pulley
- 25) Pulley Cover
- 26) Cover Screw
- 27) Block Screw
- 28) Base
- 29) End Cover
- 30) Motor
- 31) Motor Attachment Screw
Motor Cord
Switch

PILOTS AVAILABLE

Pilot Number Caliber

- | | |
|-----|-----------|
| 1) | 22 |
| 2) | 6mm |
| 3) | 25 |
| 4) | 6.5 |
| 5) | 270 |
| 6) | 7mm |
| 7) | 30 |
| 8) | 31 |
| 9) | 32 |
| 10) | 33 |
| 11) | 35 |
| 12) | 375 |
| 13) | 44 |
| 14) | 45 pistol |
| 15) | 45 rifle |
| 16) | 41 |

****Special Instructions for 20 cal. PCT Pilot****

- Loosen set screw that holds carbide cutter blade.
- Slide blade away from center hole in cutter head.
- Insert 20 cal. pilot with milled flats indexed to the slot on the face of the cutter head.
- Slide the carbide cutter blade into position. Make sure the blade is making contact with the flat on the pilot shank and the rear edge of the pilot head is against the cutting edge of the blade.
- Tighten cutter blade lock screw, then pilot lock screw.
- To remove the 20 cal. pilot it will be necessary to loosen the cutter blade just as during installation.

No other PCT Pilots require the loosening of the cutter blade to install / remove.